

# GPS Tracking Solutions



## for Energy and Service Delivery Fleets

### Management Issues:

- Excessive overtime
- Fleet tracking
- High fuel costs
- Inefficient routing
- Insurance risks
- Public safety
- Liability protection
- Unauthorized vehicle use
- Poorly maintained vehicles
- Community service

### Tracking Systems provides:

- Improved accountability
- Improved documentation
- Time card verification
- Competitive advantage for funding
- Driver/passenger protection
- Improved routing
- Improved vehicle maintenance
- "True" leasing



**E**scalating energy costs have a dramatic impact on the cost of doing business for both provider and end-user. In today's volatile economy, this is especially true for energy and service delivery companies competing in perhaps the toughest business climate on record. To maintain their edge and remain profitable, efficiencies must be realized. For fleet service vehicles, that process begins with Tracking Systems' onboard GPS solution, your one-stop source for reduced overhead, improved dispatching capability and better customer service.

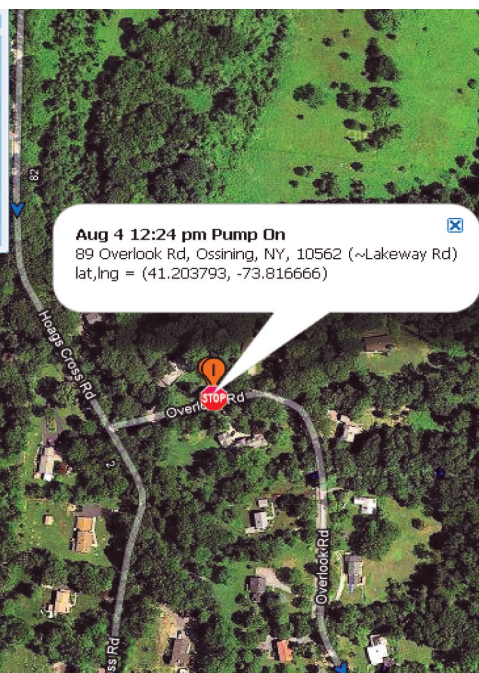
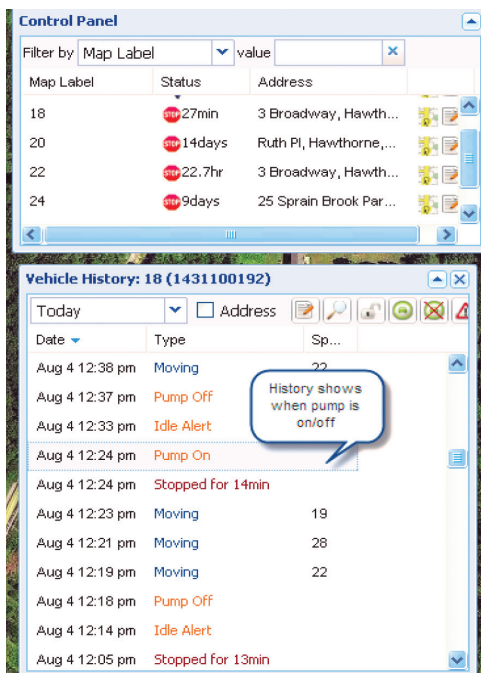
Tracking Systems' full range of Web-based, real-time fleet services — combined with detailed mapping and reporting capabilities — can help identify and reduce:

- Excessive idle times
- Poor driver routing
- Unauthorized vehicle use
- Speeding
- Unsafe driving practices
- Wasted man hours, and more

The result? Improved efficiencies that range from substantial fuel savings to reduced maintenance and insurance costs. And that adds up to a better bottom line!

## Why Tracking Systems?

- Flexible
- Customizable
- Easy to use
- No software purchase necessary
- Web-based and hosted
- Multiple hardware configuration
- Fleets separated by department
- Highly secure data center
- Homeland Security compliant
- Local customer support
- Woman-owned enterprise



## Tracking Systems... keeping watch over what matters most.

### Features

- Services are available from any Internet connection
- Multiple workstations can be connected simultaneously
- Administrator has control over all access parameters and can identify each user with separate login and password
- Information to and from the server is encrypted and secure
- Vehicle route replay for up to 6 months
- Monitors oil changes, registration and maintenance schedules
- Hardware sensors for doors, seats, plows, sanders, sirens, emergency lights, gunlocks, drug cabinets and more
- Remote passenger seat and door sensors

- Hijack switch alerts dispatcher to disable ignition
- Alerts from sensor triggers can be transmitted via cell phone and email, and are displayed on dispatch screen for immediate response
- All reports can be saved in Microsoft® Excel for historical comparisons in PDF format or printed

### Benefits

- Increased employee efficiency
- Reduced maintenance costs
- Reduced fuel costs
- Reduced overtime costs
- Potential liability reduction
- Employee safety and security
- Enhanced employee accountability
- Reduced paperwork
- Peace of mind



343 Hill Avenue | Montgomery, NY 12549 | 845.738.2200  
[www.track-sys.com](http://www.track-sys.com) | [sales@track-sys.com](mailto:sales@track-sys.com)